

VISUALIZATION OF MELTING CLAY PIECES

SHAPE, METHOD AND MATERIALS



Wheeled and facet cut red clay and ball clay. Unfired

SHAPE, METHOD AND MATERIALS

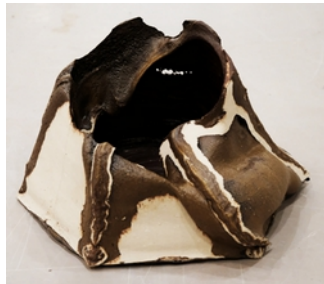


Wheeled and facet cut earthenware. Ball clay slip at the inside. Unfired

TEMP., TIME AND EQUALIZATION



Orton-cones no. 3, 4 and 5
The kiln cooled down automatically.



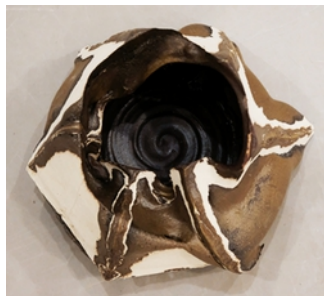
Same, burned to 1195 ° C.



Same, burned to 1175° C.



Orton-cones no. 3, 4 and 5.
The kiln cooled down by 40 ° C. per hour.



Same, seen form the top



Same, seen form the top



Wheeled and facet cut red clay and ball clay. 1180 ° C.



Wheeled and facet cut blue clay and ball clay. 1180 ° C.



Same type but burned twice to 1180 ° C



Wheeled and facet cut red clay and ball clay. 1190 ° C.



Wheeled and facet cut red clay and ball clay 1195 ° C.